

**Canon**


you can

See more with  
fundus auto-  
fluorescence.



**CR-2 PLUS NON-MYDRIATIC  
DIGITAL RETINAL CAMERA**

*We Speak Image*



Impressive vista.  
Broad spectrum.  
Multiple applications.

Setting new frontiers in diagnosis and monitoring. The CR-2 Plus, innovative, non-mydriatic retinal camera with fundus autofluorescence.

#### More reliable diagnoses with FAF

The diagnosis of retinal disorders with fundus autofluorescence (FAF) is becoming more and more popular. This is because it is very gentle, being non-invasive, and gives quick and easy information on the health of the retinal pigment epithelium (RPE). FAF imaging has shown to be very useful for the early detection of Age-related Macular Degeneration (AMD), one of the leading causes of visual impairment. Recent studies indicate that FAF imaging can also aid the diagnosis of a variety of other diseases and even detection of intraocular tumors. When using FAF in conjunction with other diagnostic equipment, eye care professionals can more confidently diagnose ocular disease.

**The new CR-2 Plus digital retinal camera** marks another milestone in Canon's long and successful history in non-mydriatic camera development and with its innovative technology, provides insight into the future. The CR-2 Plus delivers numerous improvements in diagnosing both common and rare disorders through fundus autofluorescence. With it, you are equipping yourself today for the AMD screening programmes of the future. With the FAF photography mode, the CR-2 Plus becomes an extremely versatile non-mydriatic camera. This versatility is undoubtedly due to the enormous bandwidth of possible clinical applications as a stand-alone solution or as an add-on device for existing equipment. The CR-2 Plus can be defined by its quality, for example it delivers the highest Canon image quality and image processing thanks to its dedicated camera with EOS technology specifically designed for ophthalmic use.



## CR-2 PLUS

Digital Retinal Camera

High-performance non-mydrriatic retinal camera with integrated FAF photography.



Canon EOS  
Camera Technology



Stereo Mode



Non-Mydrriatic



Mydrriatic



FAF



## BETTER DIAGNOSIS WITH FAF

### Extended functionalities in a sleek design

305 W x 500 D x 513 H mm, 19.9 kg



### Integrated EOS technology

In addition to being optimized for ophthalmic imaging, the dedicated EOS camera combines several functions in one:

- IRed observation
- 3.0 inch vari-angle LCD screen for optimized viewing angles (external monitor optional)
- 18 megapixel CMOS sensor
- Photometric sensor for automatic flash and observation light control

## Benefits further than the eye can see.

**Unique EOS digital camera** The CR-2 Plus is equipped with a unique 18 megapixel digital EOS camera created for ophthalmic imaging, only available on Canon devices for the best possible retinal image.

**Wide range of ISO settings to suit your needs** Lower ISO values for best possible image quality. Higher ISO values with low flash for improved patient comfort, quick successive imaging and higher throughput.

**No more incorrect flash settings** The photometric observation delivered by the dedicated EOS camera technology will provide excellent pictures, independent of the patient's pupil size and ethnic origin. You really cannot do anything wrong.

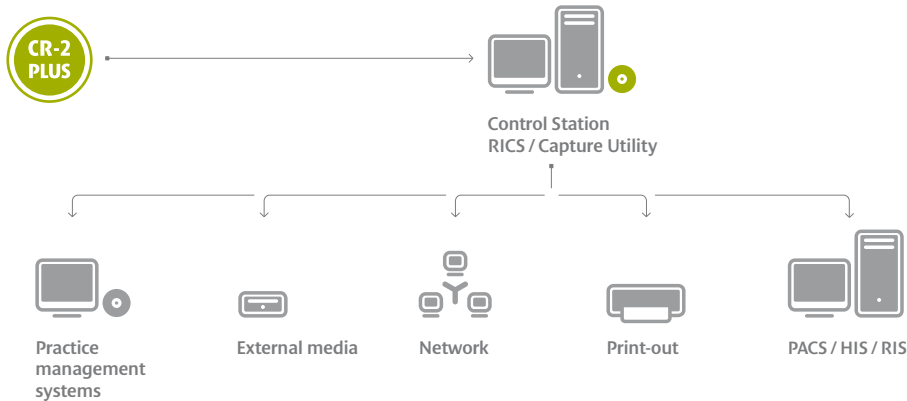
**Compact design and comfortable ergonomics** The CR-2 Plus is so compact that nothing stands in the way of communication with your patients and smooth workflow.

**Get good pictures faster and more efficiently** The control panel is equipped with central control that makes intuitive operation possible for you. You are in FAF photography mode at the touch of a button.

**Stereo photography was never so easy** With the help of the software-guided stereo photography, simply align the CR-2 Plus using the stereo guide marks that are shown on the EOS screen. And that's it.

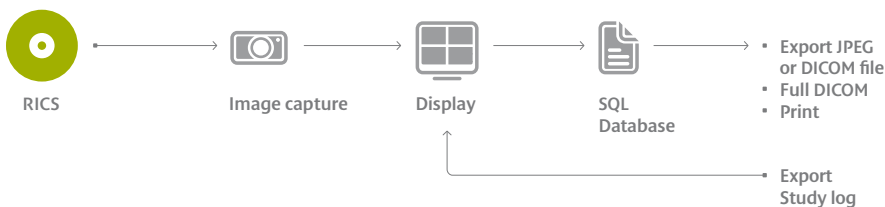
**Anterior eye photography made simple** With the additional macro lens setting, you can easily and quickly take anterior eye photographs and create documentation of the cornea, pupil, and sclera.

# Configuration



Canon is constantly thinking ahead when it comes to software design, and understands the importance of networkability and ease of integration. This has resulted in the development of new solutions that are designed to be flexible to suit the needs of the user and their image management systems. The Canon Retinal Imaging Control Software allows the CR-2 Plus to be used as a stand-alone system. CR-2 Plus can also easily be integrated into an existing clinic network or DICOM compliant network system. The seamless integration with practice management systems is possible using the Canon Non-Myd RC Capture Utility software, specifically developed for this purpose.

## RICS Retinal Imaging Control Software



In the latest version of Canon's extensive Retinal Image Control Software, image capturing, processing, archiving, referencing and exporting data have been made much easier.

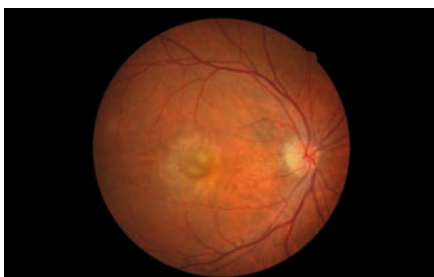
Features include:

- Extensive study input possibilities
- Full screen mode
- Loupe function
- Stereo view screen
- Image comments function
- Study comparison
- Cup / Disc ratio
- Digital cobalt and red free
- Full DICOM compliance

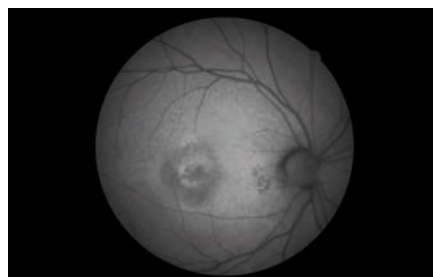
<sup>1,2)</sup> Digital red free and cobalt image.

Advanced digital filter technology for exceptional red free and cobalt images.

<sup>3)</sup> With the anterior mode you can easily and quickly take anterior eye photographs and create documentation of the cornea, pupil, and sclera.



Colour image



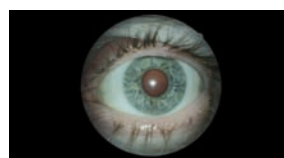
FAF image



D-cobalt image <sup>1)</sup>



D-red free image <sup>2)</sup>



Anterior segment <sup>3)</sup>

# Specifications

Dimensions	305 W x 500 D x 513 H mm
Weight	19.9 kg
Angle of view	45 degrees
Minimum pupil size	ø 4.0 mm (SP mode ø 3.3 mm)
Magnification	X2 (digital)
Photography modes	Colour / FAF / D-red free / D-cobalt
Anterior segment photography	Equipped
Working distance	35 mm
Mounted Camera	Dedicated digital camera unit using EOS camera technology

ISO range	ISO 200, 400, 800, 1600, 3200 and 6400
Flash intensity setting	Photometric auto exposure / manual
Focus adjustment	Split lines
Working distance adjustment	Working distance dots
Observation lamp	LED IRED
Photography lamp	Strobe tube (xenon)
Optional accessories	External eye fixation unit Chin rest paper (500 pieces / pack)

Canon has been defining the future with innovative solutions for more than 70 years. In all that time we've constantly strived to improve medical diagnostics in healthcare. Perhaps that's what made us a leading global provider of eye care solutions.



**Canon Eco**

Our actions are based on honesty and sustainability.



**Canon Quality**

Safety and quality are an integral component of our actions.



**Canon Flexibility**

Everything we do has to have a superior customer advantage.

Choose the eye care system of the future and let our local, authorized Canon dealer advise you:

**Canon**

CR-2 Plus  
English-NL Edition 2097V717  
© Canon Europa N.V. 2011

**Canon Europa N.V.  
Medical Systems Division**

Bovenkerkerweg 59-61  
1185 XB Amstelveen  
The Netherlands  
Phone: +31 (0)20-545-8545  
Fax: +31 (0)20-545-8220  
[www.canon-europe.com/medical](http://www.canon-europe.com/medical)